

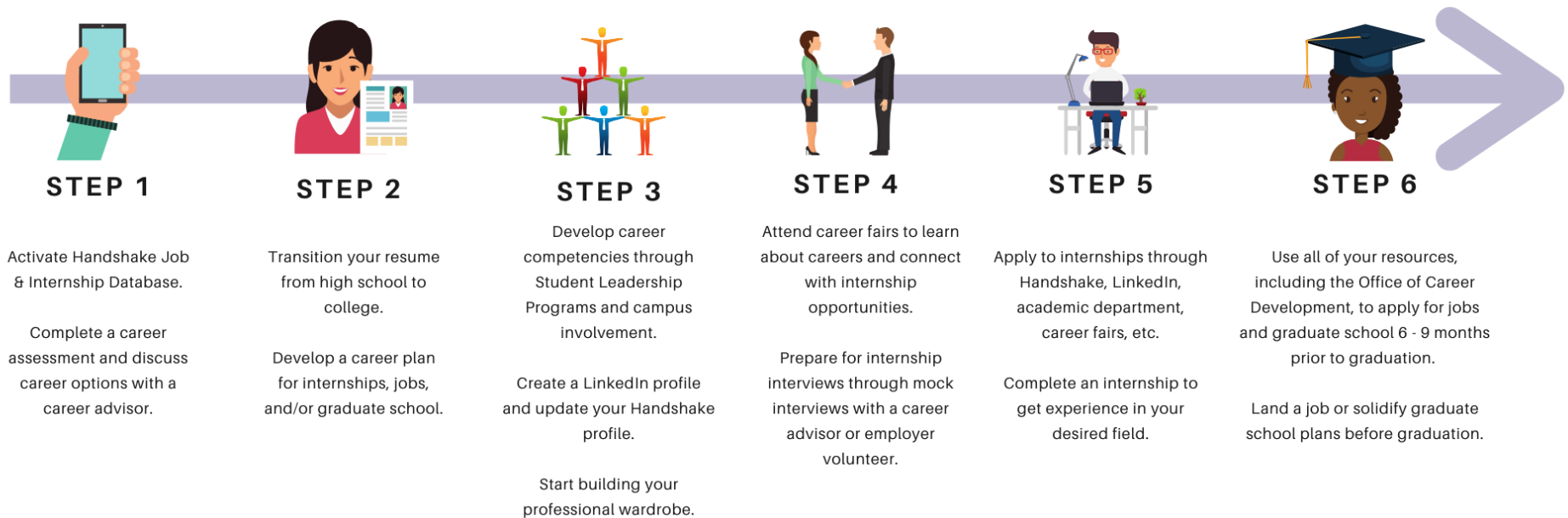


**Middle Georgia**  
State University

CENTER FOR CAREER & LEADERSHIP DEVELOPMENT

# THE MGA PATHWAY TO CAREER READINESS

A four-year career plan for all MGA students



**MGA.EDU/CCLD | MGA.JOINHANDSHAKE.COM | CAREERSERVICES@MGA.EDU**

**MACON: SLC 261, 478.471.2714 | COCHRAN: SANFORD 112, 478.934.3110 | DUBLIN: OFFICE OF STUDENT LIFE, LIB - 94, 478.275.6670**