

## Connect using WPA2-Enterprise in Windows 7

1. In the lower right corner of the screen you will see a wireless indicator either:

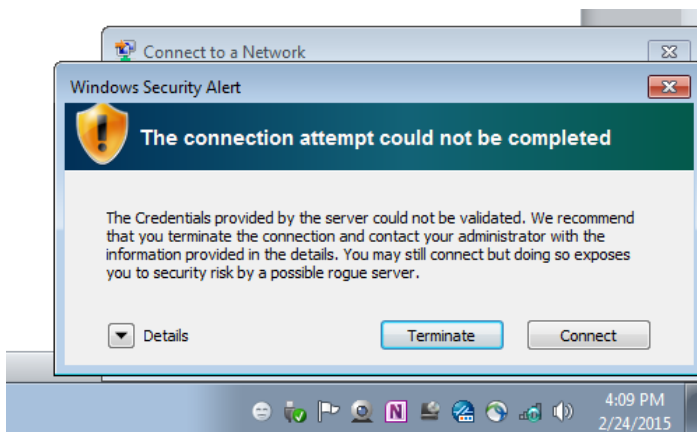


Left click on the icon to bring up available connections.

2. Select “**MGANet-Secure**” and click “connect.” If you are in the dorms, you must select “**ResNet-Secure.**”



3. When prompted with the “Windows Security Alert,” click “connect” to save the DigiCert Global Root certificate to your “Trusted Root Certificate Authorities” list.



4. You will be prompted for a username and password. Enter your MGA email address and password and click “OK.”

